

Postek

I Series Barcode Label Printer



- Rugged industrial design, strong, all-metal construction for 24×7 printing in harsh industrial environments.
- Powerful 32-bit ARM processor, large memory and high-speed interface guarantees superior throughput.
- Easily print accurate time and date on labels with embedded real time clock/calendar.
- Comes standard with a full version of PosLabel software for powerful and user-friendly label design capabilities. A great savings!

With its rugged all-metal construction, patented printing mechanics and reliable electronics, the I Series printer minimizes downtime and maintenance costs. By using the buttons and the 3 line graphical LCD on the front panel, users can bypass their computers to conveniently set up, configure and fine tune printing parameters.

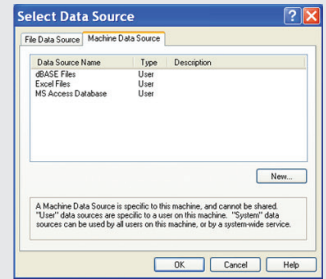
Postek I Series Barcode Label Printer is ideal for diverse applications, including: Compliance Labeling, Logistic Tracking, WIP Tracking, WMS Pallet Labeling, and Asset Tracking

PostekTechnologies.com

Specifications:

Mode	I 200	I 300
Printing method	Direct Thermal & Thermal Transfer	
Printing resolution	203 dpi (8 dots/mm)	300 dpi (11.8 dots/mm)
Max printing speed	6 ips (152.4 mm/s)	6 ips (152.4 mm/s)
Max printing width	4.25" (108 mm)	4.17" (106 mm)
Max printing length	315" (8000 mm)	157" (4000 mm)
CPU / Memory	32-bit ARM Processor / 4 MB FLASH ROM, 16 MB SDRAM	
Media	Width: 4.56" (116 mm) max, 0.79" (20 mm) min. Total thickness (including liner, if any): 0.0024" (0.06 mm) ~ 0.0098" (0.25 mm). Supply roll: OD 8" (203.2 mm) max. ID 1.5" (38 mm) min.	
Ribbon	Max width: 4.65" (118 mm). Max length: 1968.5' (600 M). Ink side: Supports both In and Out. Ribbon roll: OD3.3" (84 mm) max. ID 1" (25.4 mm) min.	
Fonts	User-download TrueType Fonts (optional), Five built-in ASCII fonts	
Bar Code Types	1D Barcode: Code 39, Code 93, Code 128/subset A,B,C, Codabar, Interleave 2 of 5, UPC A/E 2 and 5 add-on, EAN-13/8/128, UCC-128. 2D Barcode: MaxiCode, PDF417, Data Matrix, QR.	
Media sensor	Reflective (Adjustable) / Transmissive (Adjustable)	
Interfaces	RS-232 Serial, USB	
LCD Display	3 Line Graphical	
Power rating	110/220VAC±10%, 50/60 Hz	
Weight	33.06 lbs (15 kgs)	
Dimensions	W 11.3 x D 17.6 x H 11 inches (W 286 x D 448 x H 280 mm)	
Operation environment	Temperature: 32° F ~ +104° F (0° C ~ 40° C) Relative humidity: 5% - 85% non condensing	
Storage environment	Temperature: -40° F ~ +140° F (-40° C ~ 60° C) Relative humidity: 5% - 85% non condensing	
Optional items	External Rewinder and Rotary Cutter	

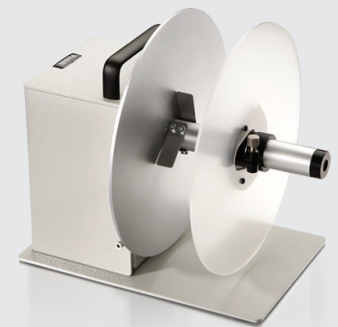
All specifications are subject to change without notice.



PosLabel Supports
ODBC Connection



Heavy Duty Rotary
Cutter: A150/A300



External Rewinder: R120



Manual Dispensing

Postek Technologies, Inc.

4301 Vineland Rd., Suite E6 Orlando, FL 32811-7188

Tel: (407) 843-9939 Fax: (407) 843-9938

www.PostekTechnologies.com

Postek